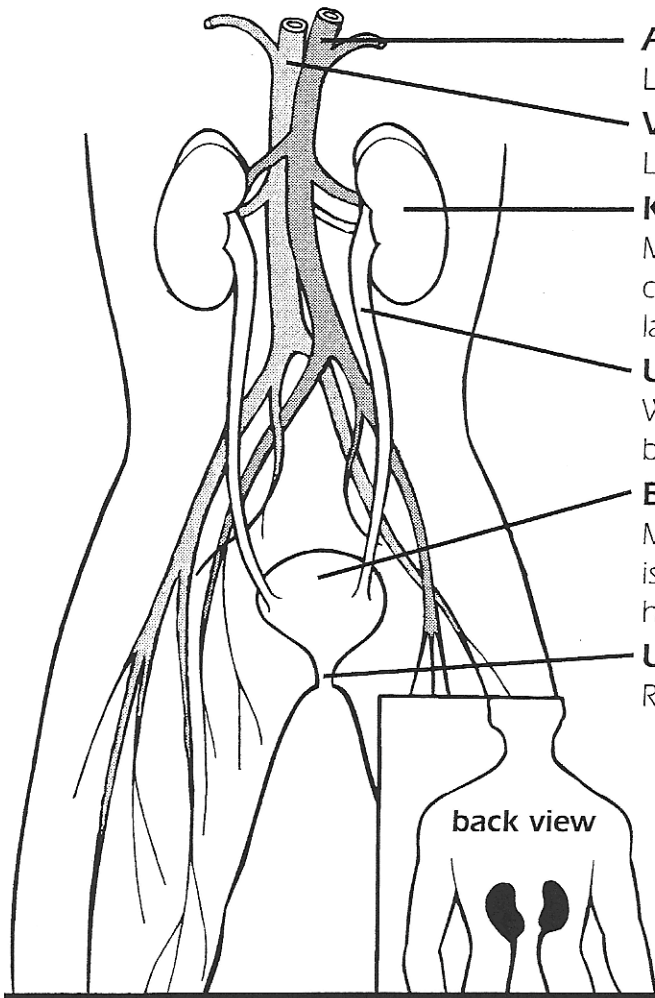


BODY SYSTEMS

EXCRETORY SYSTEM

The main function of the excretory system is to remove waste from the body.

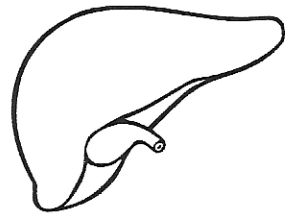


- Artery**
Leads away from the heart.
- Vein**
Leads to the heart.
- Kidneys (2)**
Main organs of excretory system. Act as filters to capture waste. They are protected by lower ribs and layers of fat.
- Ureters**
Waste drains from kidneys through ureters into bladder.
- Bladder**
Muscular bag in lower abdomen Waste from kidneys is stored until released from body. Adult bladder can hold about one quart (0.946 l) of fluid.
- Urethra**
Releases waste in the form of urine from the body.

200 liters of blood are filtered daily by the kidneys. The usable material is sent into the blood stream. Waste is drained into the bladder.

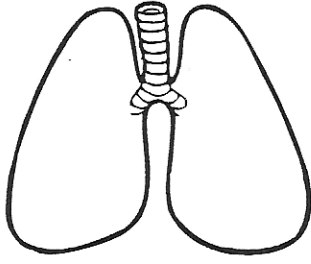
Other Organs Involved in Removing Waste from the Body

Liver



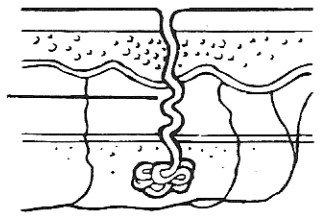
cleans waste particles from blood

Lungs



remove carbon dioxide and water from blood

Skin



gives off perspiration (water and dissolved mineral salts)

BODY SYSTEMS**EXCRETORY SYSTEM**

Fill in the blanks below with the correct words from the list.

ureters	bladder	urethra	ribs
artery	vein	blood	heart

- Your kidneys are protected by _____ and fat.
- A muscular bag that stores urine before it is eliminated from the body is the _____.
- The _____ are tubes leading from your kidneys to your bladder through which waste fluid drains.
- Urine exits the body through the _____.
- Blood enters the excretory system through a/an _____.

Match the organ with its function. Put the letter of the organ on the line to indicate your choice of answers.

- | | |
|--|-------------------------------|
| 6. _____ Filter liquid waste from the blood | A. sweat glands in skin |
| 7. _____ Filters solid particles in the blood | B. lungs |
| 8. _____ Undigested solid foods are stored and removed | C. liver |
| 9. _____ Gives off perspiration | D. kidneys |
| 10. _____ Help protect the kidneys from injury | E. urethra |
| 11. _____ Pumps blood throughout the body | F. large intestine and rectum |
| 12. _____ Remove carbon dioxide and water from blood | G. lower ribs |
| 13. _____ Liquid waste passes out of the body through this organ | H. heart |

Complete the following activities:

- Find out why urine is yellow.
- Find out about a kidney transplant and make a report telling what it is and why it could be necessary.
- What causes diarrhea?
- What causes constipation?

